

# ET Summit 2019

Presented by



# Mutual Housing California

Bryan Dove

Director of Asset Management

Mutual Housing California



“Mutual Housing California develops, operates and advocates for sustainable housing that builds strong communities through resident participation and leadership development.”





You've traveled 58,000  
electric miles with Our  
Community CarShare!  
Congrats! ⚡🚗





## Mutual Housing at Spring Lake



### Phase 1

- 2015
- 62 Units
- 1 – 4 Bedrooms
- Permanent Farmworker Housing



### Phase 2

- 2019
- 39 Units
- 1 – 3 Bedrooms
- Permanent Farmworker Housing



## Mutual Housing at Spring Lake Energy Efficient Features

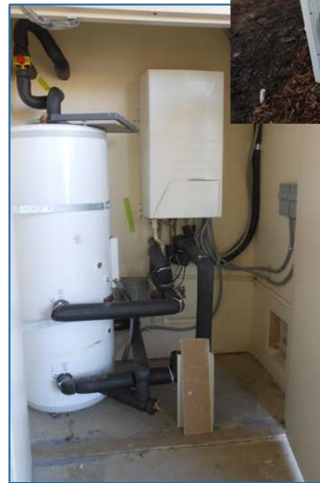


Energy Star  
Appliances and  
Lighting



Low Flow & Heat  
Sensing Showerheads

Heat Pump HVAC/Hot  
Water Heater



R-21  
Insulation

Nexi Energy  
Monitors



## Mutual Housing at Spring Lake



### **Phase 1 Zero Net Energy Financing**

\$500,000 Construction Cost Premium (2008 T24)

\$1,000,000 Solar Panel System

- \$400,000 Rebates

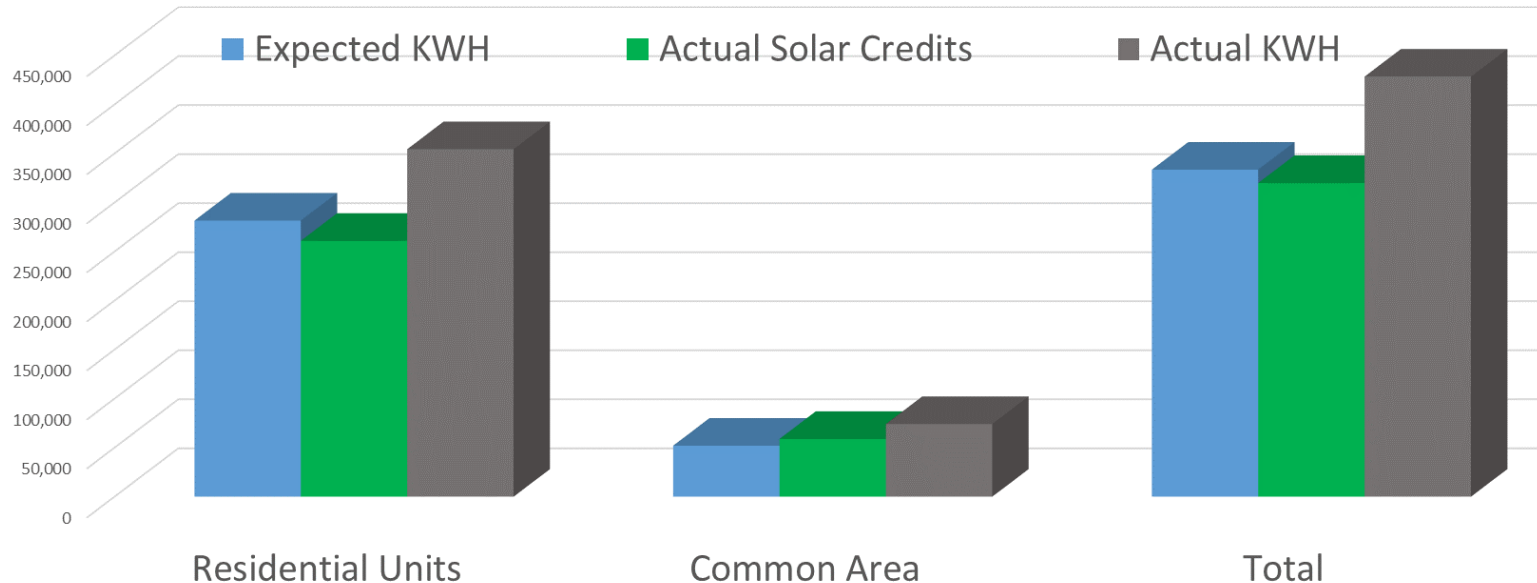
\$1.1 Million Premium

(8% Increase)

# Mutual Housing at Spring Lake

## Zero Net Energy Performance

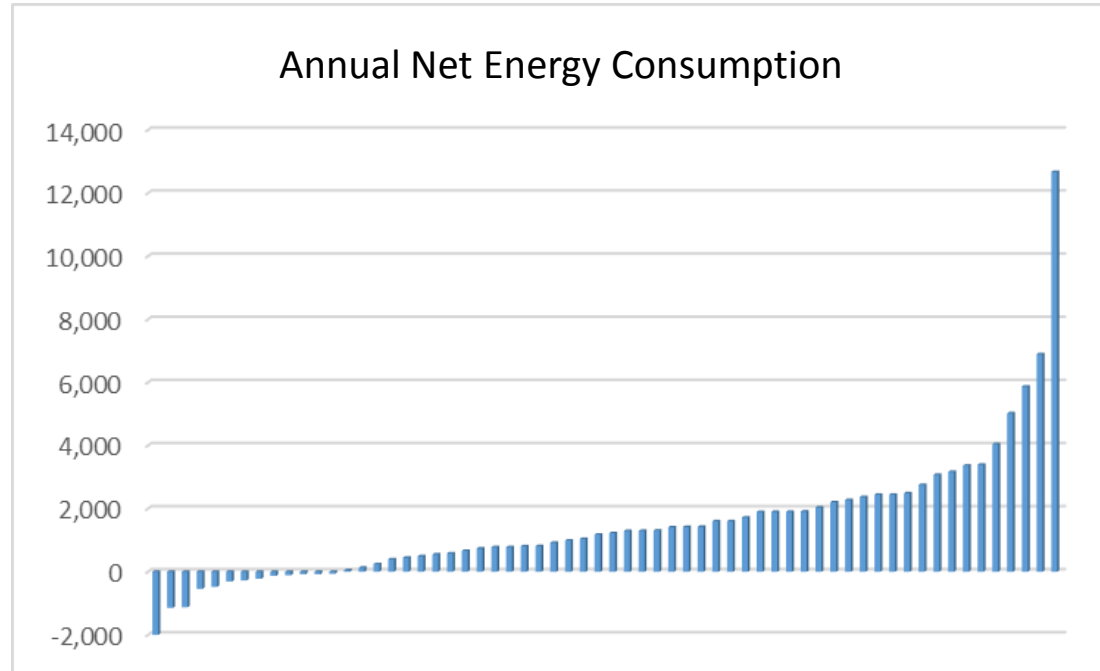
Actual Energy Consumption & Generation



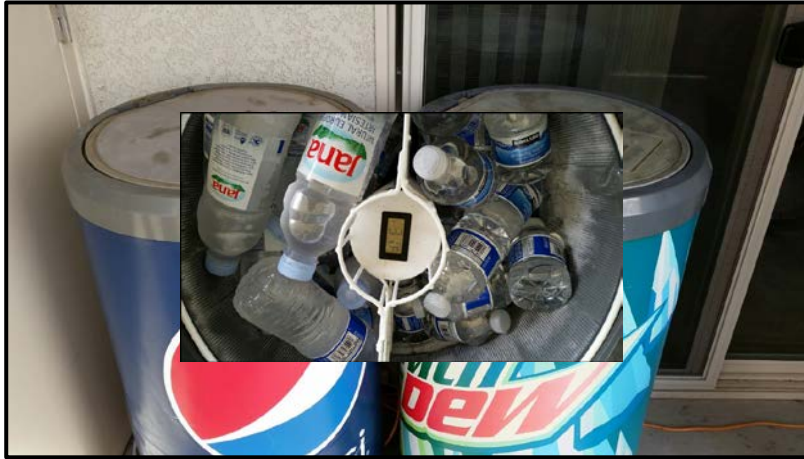


# Mutual Housing at Spring Lake

## Zero Net Energy Performance



## Occupant Plug Loads





## Post Occupancy Practices



PHASE 1  
Resident Meeting



PHASE 2  
Resident Meeting



## Take Aways

- Need to have Climate Mission and Champions
- Manage Expectations
- Ongoing Maintenance, Education and Engagement
- Access and Participation from Low Income, People of Color, and Immigrants

**Mutual Housing at Spring Lake was funded by:**

United States Department of Agriculture

Low Income Housing Tax Credits

City of Woodland

State of California Department of Housing and Community Development

California Energy Commission – New Solar Homes Program

For more information, contact Bryan Dove at [bryan@mutualhousing.com](mailto:bryan@mutualhousing.com)

Mutual Housing at Spring Lake White Paper can be found at  
[www.mutualhousing.com](http://www.mutualhousing.com)

---

## Bryan Dove

Director of Asset Management  
Mutual Housing California  
[bryan@mutualhousing.com](mailto:bryan@mutualhousing.com)  
[www.mutualhousing.com](http://www.mutualhousing.com)