

ET Summit 2019

Presented by



Resilience and Inclusion

Designing for Equity and Climate Change

Nneka Uzoh

Director of Energy Innovation

Elemental Excelsior



Since 2009, we have been accelerating startups that improve infrastructure and sustainably enhance communities. Energy, water, agriculture, and mobility startups go through two valleys of death. After interviewing dozens of startups, investors, national labs, and others, we found there was a void in funding and resources to help them overcome the second valley, commercialization, so

we created the latest accelerator of our kind

focused on helping startups find customers.



Our Triple-Track Program

GO-TO-MARKET

- Up to \$75k
- For companies with an innovative technology and an excellent team (2 or more people) we support them in one of three key strategic areas of growth: product/market fit, business model pivot, market expansion opportunities

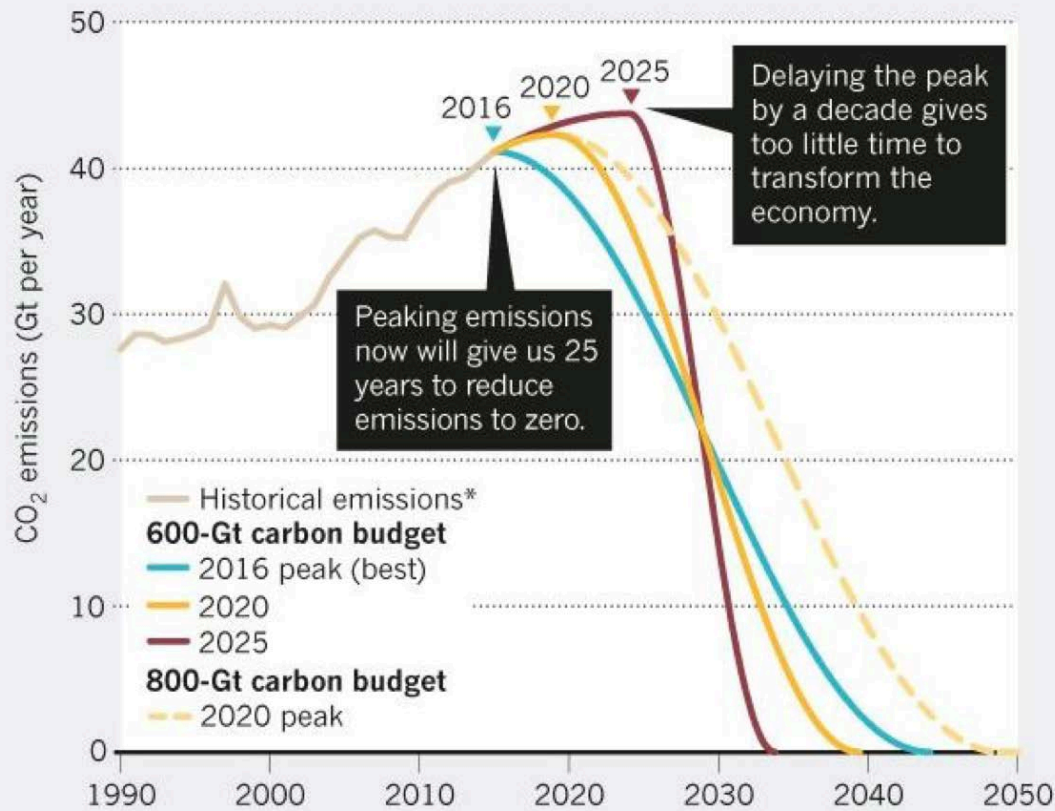
DEMONSTRATION

- Up to \$1M
- For companies with an innovative technology, customer traction, early results, and resources to grow we co-fund and design transformational projects that help companies scale.

EQUITY & ACCESS

- Up to \$750k
- For companies looking to increase tech access and sustainability for low-to-moderate income or overly polluted communities, particularly in California

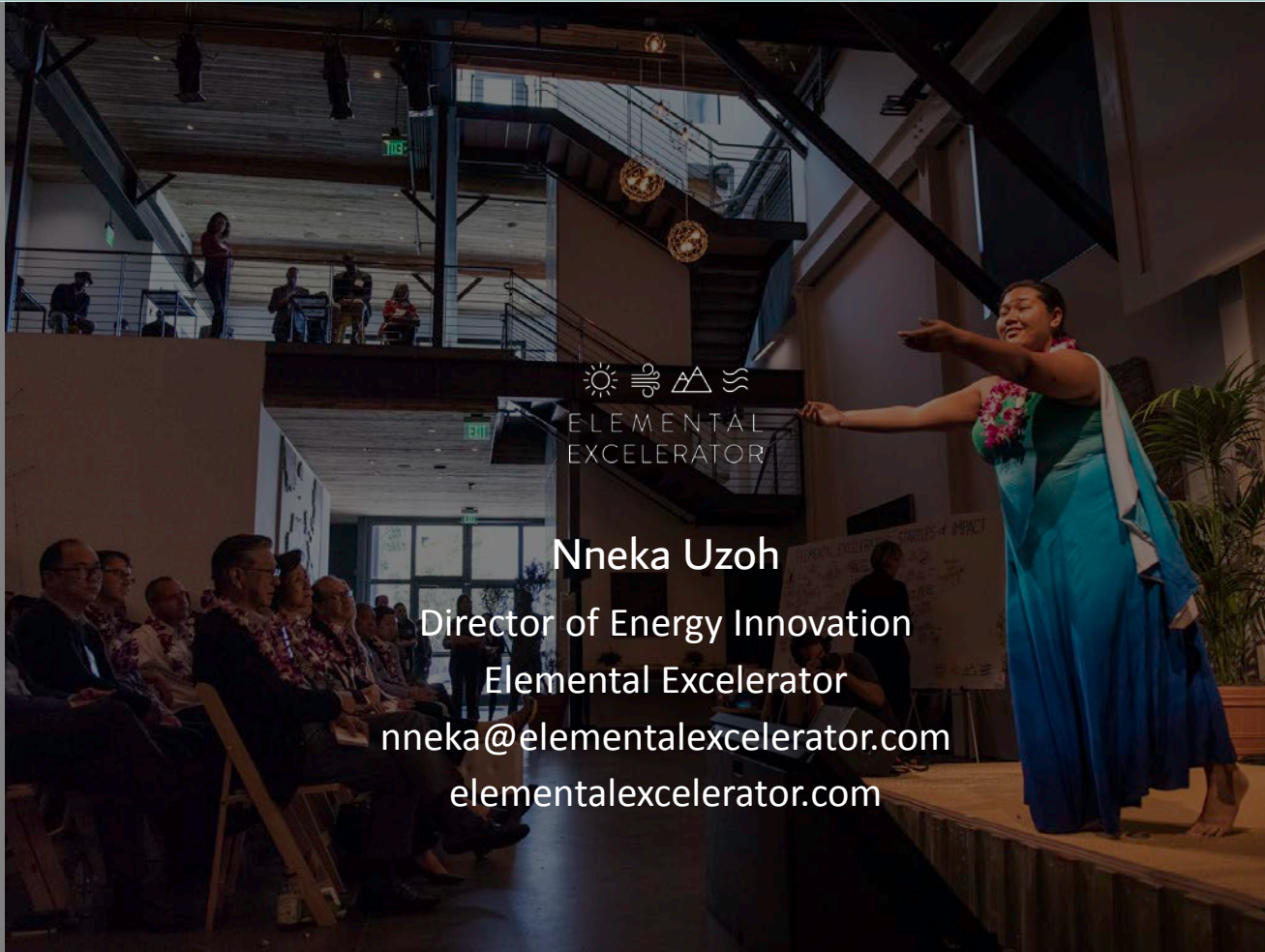
Companies from our Go-to-market and Demonstration tracks give back by contributing 1-6% equity, sharing their networks, and engaging deeply in our community.



©nature

*Data from The Global Carbon Project.





☀️ 🌊 ⚙️ 🌿
ELEMENTAL
EXCELERATOR

Nneka Uzoh

Director of Energy Innovation
Elemental Excelerator

nneka@elementalexcelerator.com

elementalexcelerator.com