

ET Summit 2024

Presented by



SMUD's 2030 Zero Carbon Workforce Pipeline

Jacobe Caditz

Manager, Regional Workforce Development and
Community Education



About SMUD

SMUD is your community-owned, not-for-profit electric service.

6th largest community-owned in the U.S.

70+ Years
Est. 1946



~**645,000** Customers

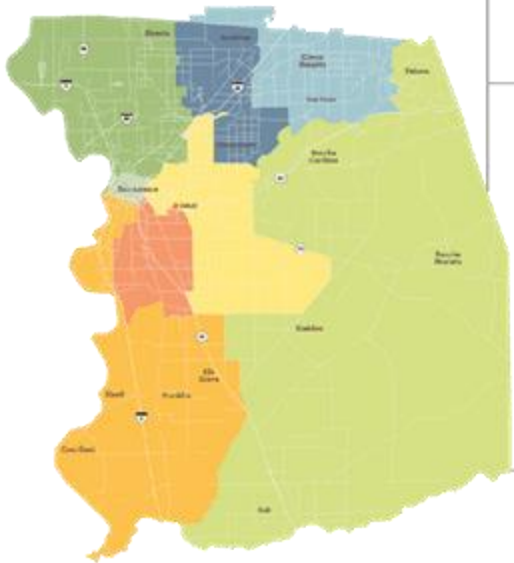
~**2,200** Employees

Power mix that's more than **50% carbon-free**

The most ambitious goal of any large utility in the United States

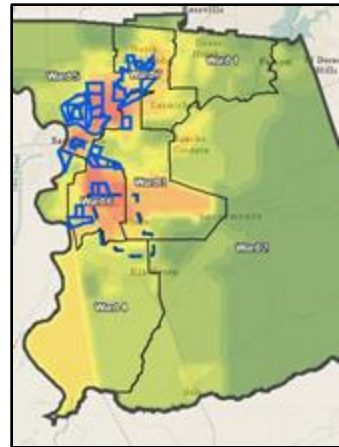


7 member Elected Board of Directors



Rates among the lowest in CA.

SMUD Community Education and Regional Workforce Development



Residential & Commercial Education

- Residential Outreach and Education Classes
- Commercial Education Classes
- Online Education Resources
- Industry Certificates



Regional Workforce Development

- Inclusive Regional Workforce Pipeline Development
- Regional Job Readiness Alignment and Program Design
- Green and Electric Job Curriculum Coordination
- Connected Workforce Training Network



Economic Development

- California Mobility Center Workforce Training
 - New Business
- Chamber Partnerships
- Regional Grant Alignment- GRIP



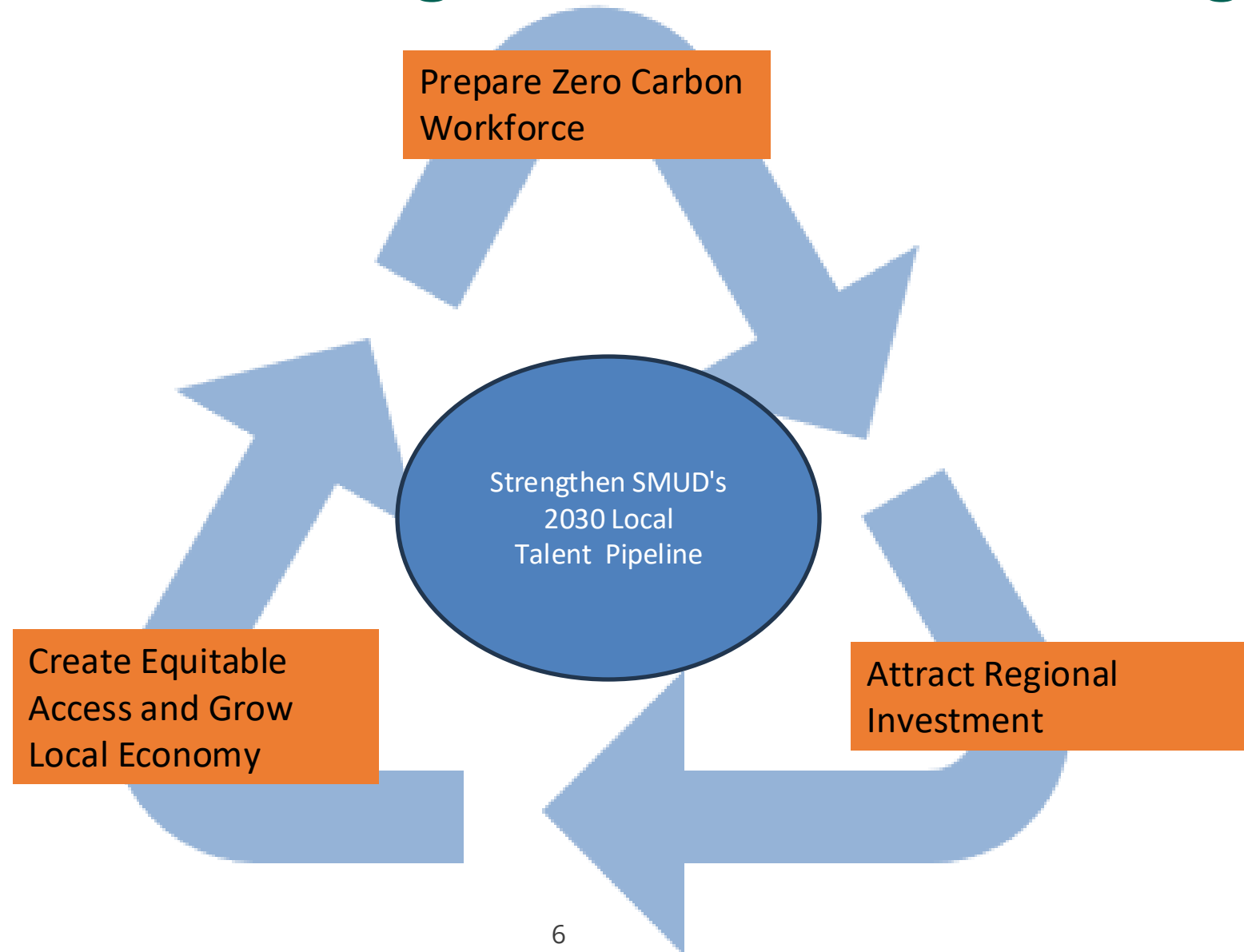
K-12 Education

- K through University Education Partnerships
- STEM Fairs and Competitions
- Teacher Resources and Curriculum Design
- Vocational Training Advancement
 - In Class Training

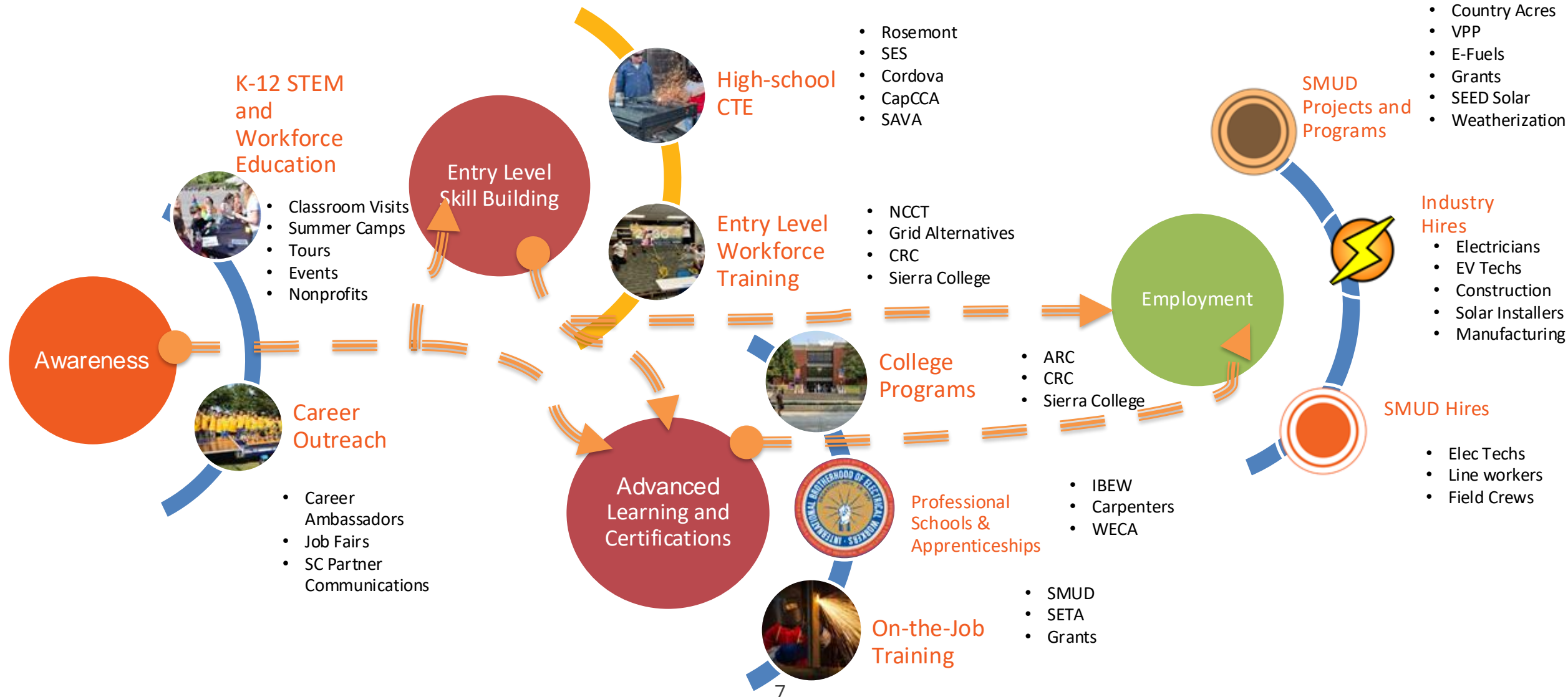
Regional Workforce Drivers

<p>Landscape</p>	<p>California's commitment to Net Zero Carbon by 2045</p>	<p>California's pledge to electric transportation—100% of new cars and trucks zero emission 2035</p>	<p>SMUD's Zero Carbon by 2030</p>
<p>Trends</p>	<p>76 California cities have building codes limiting gas use</p>	<p>(P)EV registration up 30% in 2023 in California</p>	<p>Up to ~3,000+ MW utility scale renewable generation by 2030</p>
<p>Needs</p>	<p>100K jobs for electrification needed in California annually next 25 years</p>	<p>In the Six County Region: ~288k Electric Vehicles (EVs) by 2030 ~173k EV charging stations by 2033</p>	<p>1 Utility Scale Solar Project, @344 MW, will support more than 360 jobs</p>

The ROI of the Regional Workforce Strategy



Building the Workforce Pipeline



Growing awareness of career opportunities

~28k / Year

Students and Community

- STEM Events
- Career Ambassadors
- CTE schools
- Educational Partnerships
- Internships



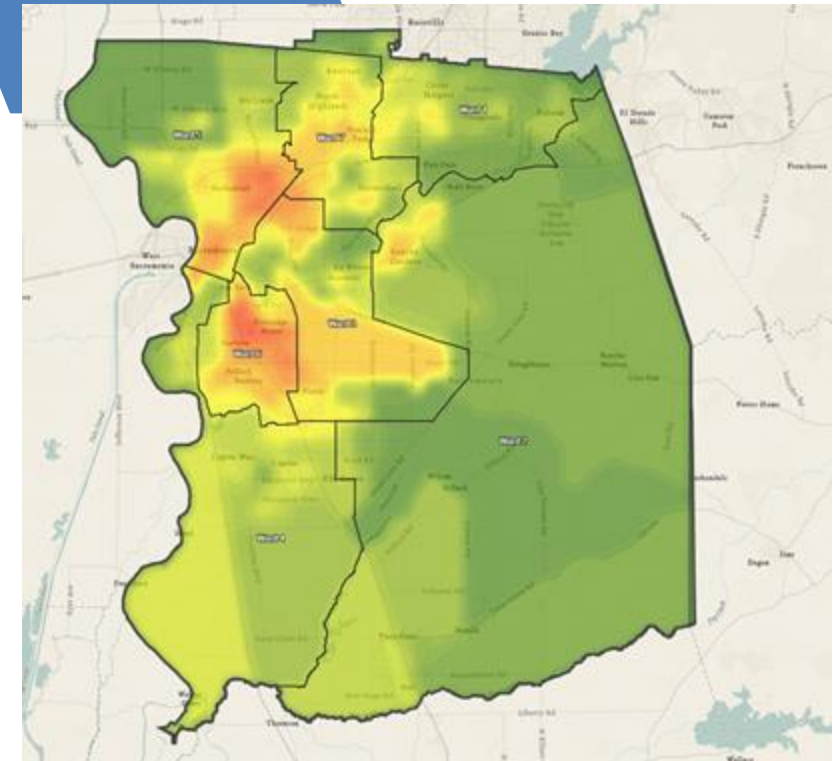
150 CBOS

Unemployed, Under-Employed, Recent Grads

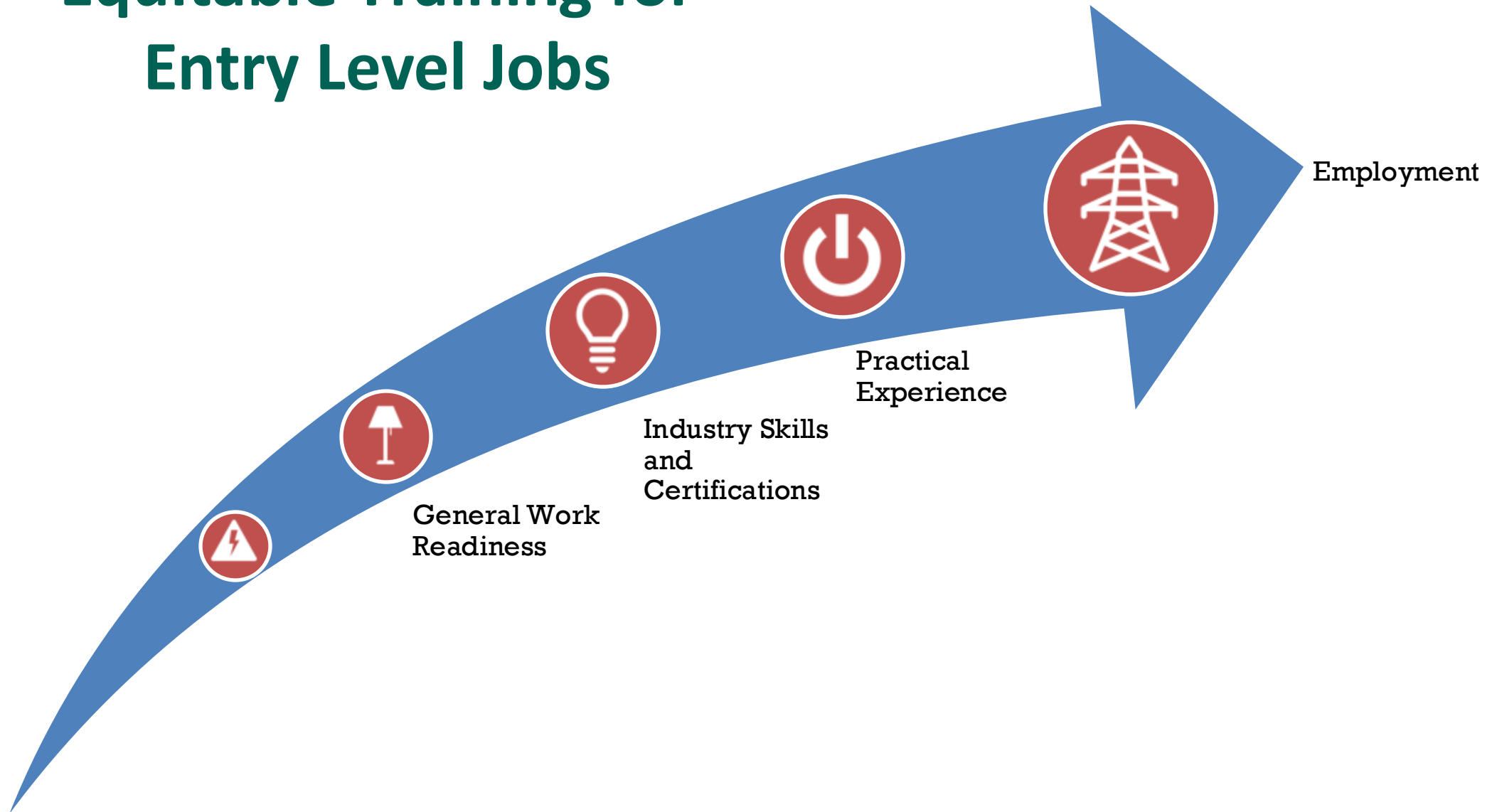
- Community Orgs
- Career Fairs
- Trade Fairs
- Workforce Partners



Targeted Outreach



Equitable Training for Entry Level Jobs



Northern California Construction and Training Electrician Pre-Apprenticeship

- Six-week, pre-apprentice training program in partnership w/ IBEW.
- Since launch in 2023, over 150 people have been trained to date.

Cohort Locations:

- Folsom Cordova Adult School in Rancho Cordova.
- Meadowview in partnership with the Sacramento Job Corps.
- Del Paso in partnership with Highlands Charter.



Solar + Electrification

Solar, battery, and Electric Vehicle Supply Equipment (EVSE) installation training.

Entering 4th year of partnership with Grid Alternatives.

Partnership Includes

- Six-week paid training program
- Average ~55 graduates every year
- Program has 60% placement rate
- New to program, Grid Alternatives incorporating SMUD 2030 zero carbon information as a part of its student outreach programming



Line Worker Scholarship Program

OVERVIEW

- First lineworker scholarship in Northern California.
- Partnership with IBEW 1245.
- Training curriculum developed by SMUD's top instructors.
- Focus on equitable outreach.



Line Worker Scholarship Program

Results

- ~600 people attended virtual information sessions.
- 207 participants in a half day orientation and practice.
- Top 35 candidates awarded scholarship to participate in SMUD's first ever Lineworker Training Scholarship program.
- 25 Scholars completed the program.
- 9 graduates were selected through a competitive hiring process and are on SMUD's lineworker apprentice hiring list.
- 5 graduates completed SMUD's 2-week Climbing School and have received regular full-time job offers.



- Regional Charging Coalition
- Electrician Pathway
- Battery Manufacturing
- More Job/shadows and Internships
- Technology and Data

Jacobe Caditz

Manager, Community Workforce and Education

SMUD

jacobe.caditz@smud.or

SMUD.org

