

ET Summit 2024

Presented by



The Future of Flexibility: An Interactive Discussion

From DR to Dynamic Pricing – What's in it for customers?



Jingjing Liu, P.E.

Technology Researcher III

Lawrence Berkeley National Laboratory

LBNL's Demand Flexibility Research

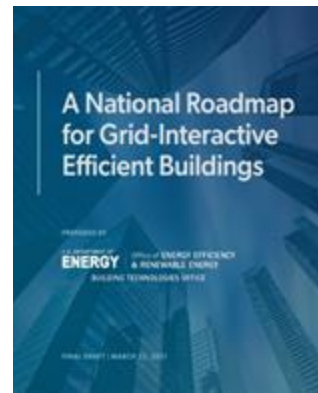
Developed OpenADR: 2002 to Present

Most Widely Used US and International Standard for Building to Grid Communication



Strategic Partnering with DOE

Developing GEB Roadmap and Connected Communities Program



Up to \$200B/yr in power system cost savings with more than 110 GW and 400 TWh of load reduction by 2030

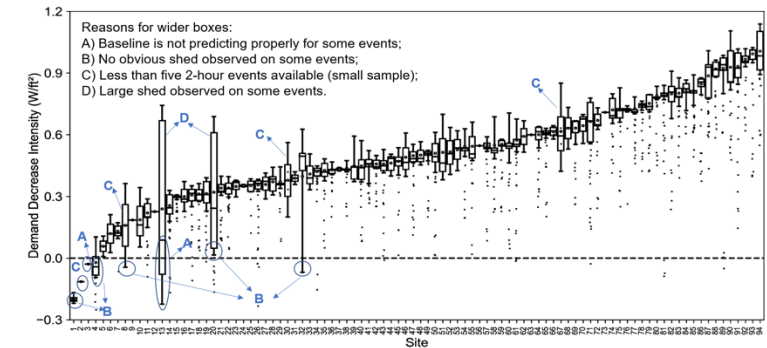


Connected-communities National Coordinator

Cross-cutting research & technical assistance

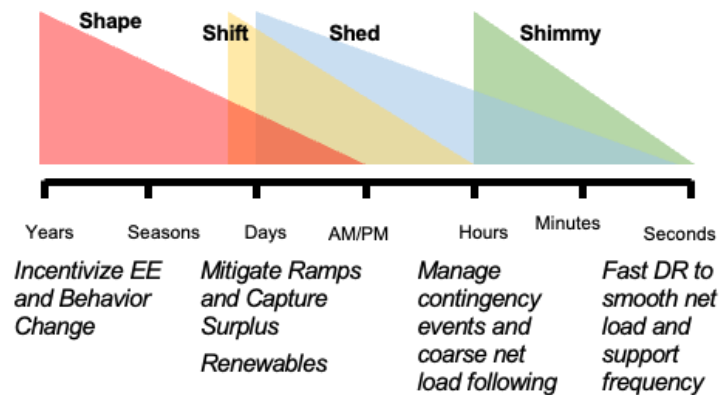
Automated DF Programs Nationwide

25 years of field demonstrations, evaluation in buildings and industry with utilities



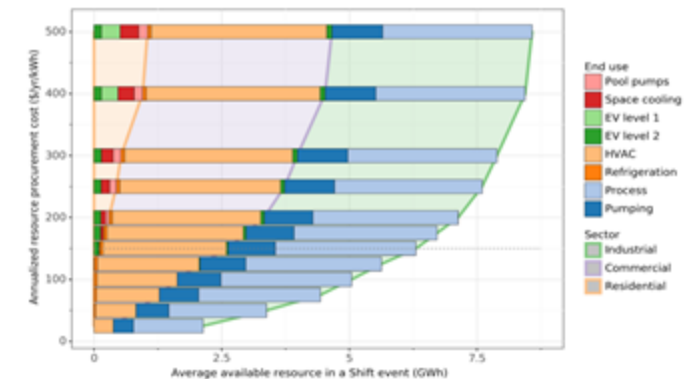
Defining Grid Services Since 2014

Used Widely, Including VPP Liftoff



California DR Potential Study

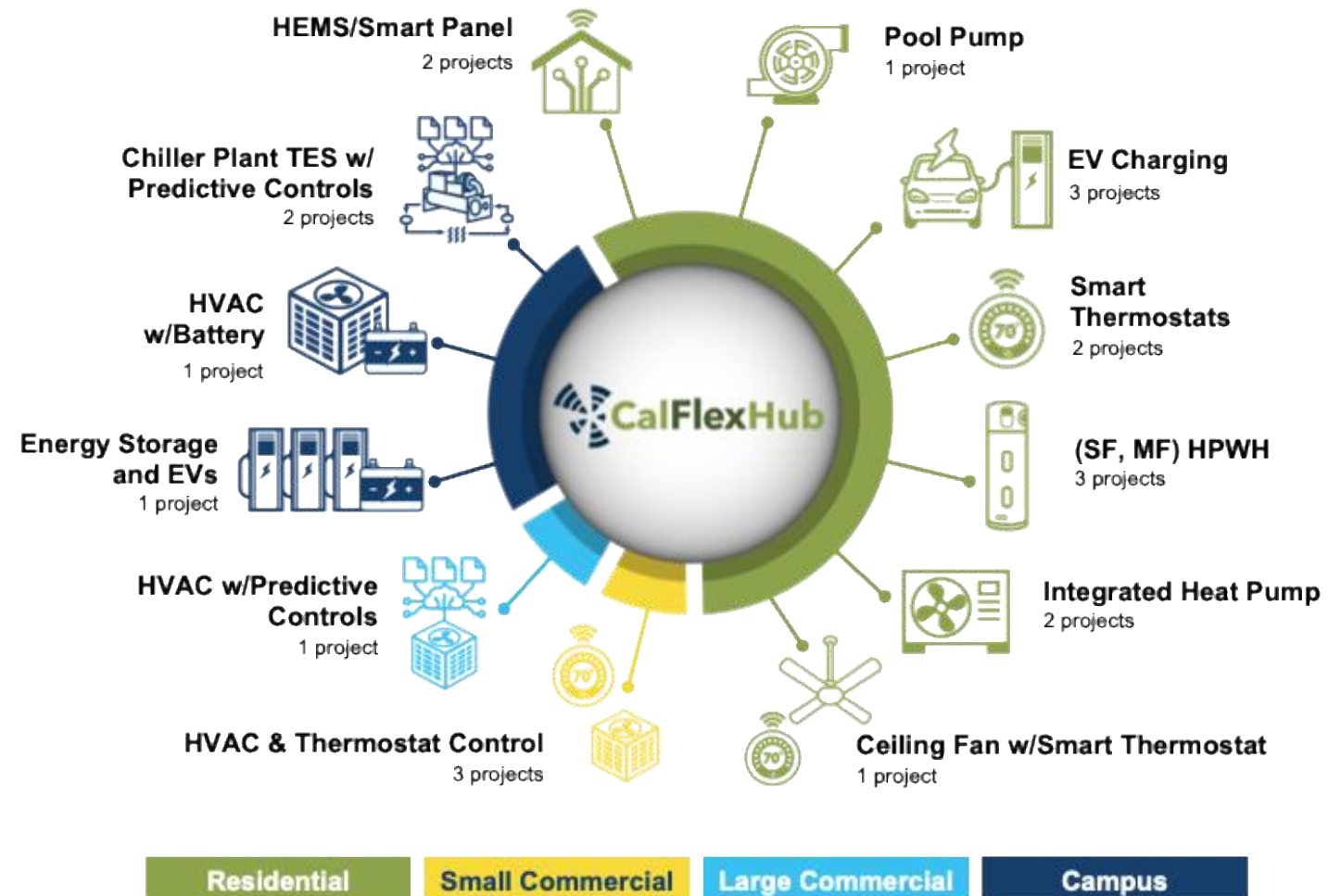
9 years of leadership in supporting CA state DR policy, legislative goals, and innovation



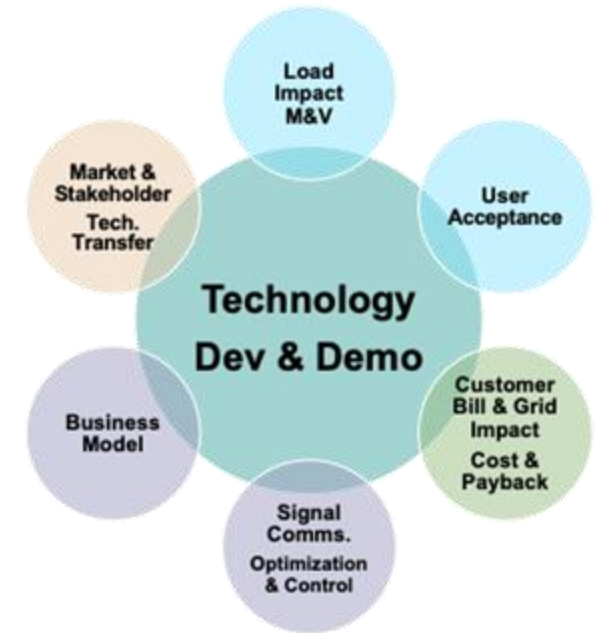
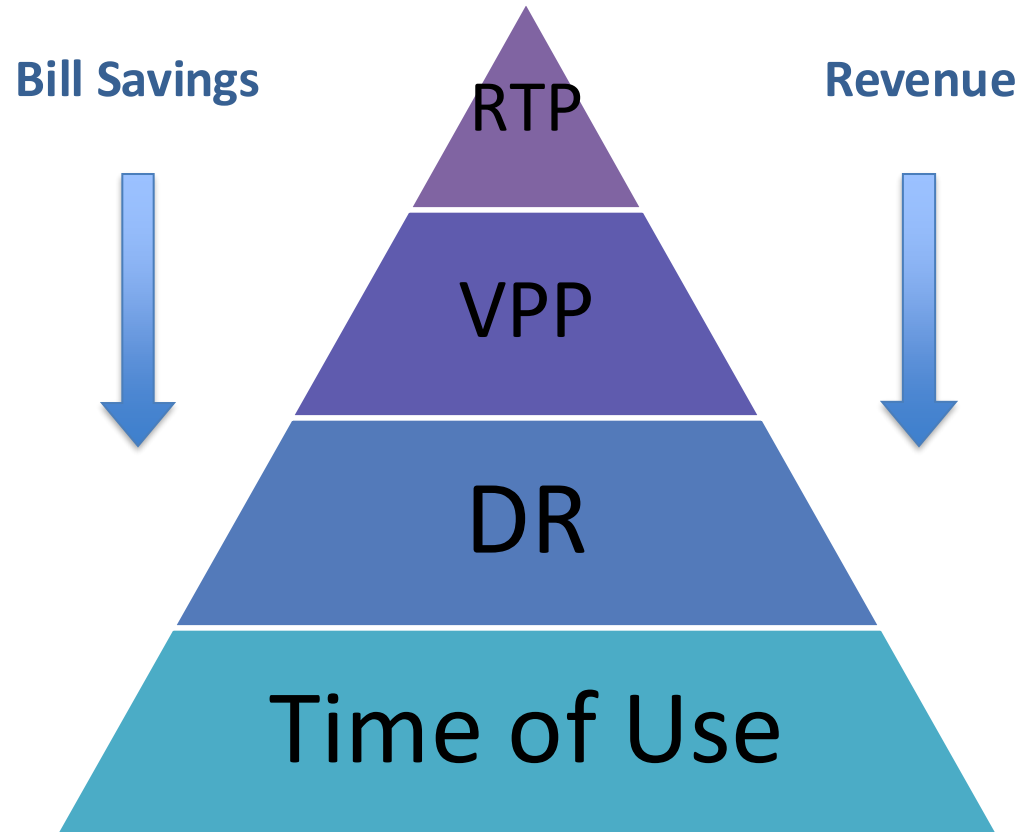
CalFlexHub is a \$16M CEC EPIC funded research, development, demonstration, and deployment (RDD&D) program (Fall 2021 - 2026) led by Berkeley Lab with 17 funded partners.

CalFlexHub seeks to build a pipeline of technologies capable of providing **automated flexible building and EV-charging loads** to the California power grid.

<https://calflexhub.lbl.gov/>



What's in it for customers?



DR – Demand Response
RTP – Real Time Pricing

TOU – Time of Use
VPP – Virtual Power Plant

Jingjing Liu, P.E.

Lawrence Berkeley National Laboratory
jingjingliu@lbl.gov



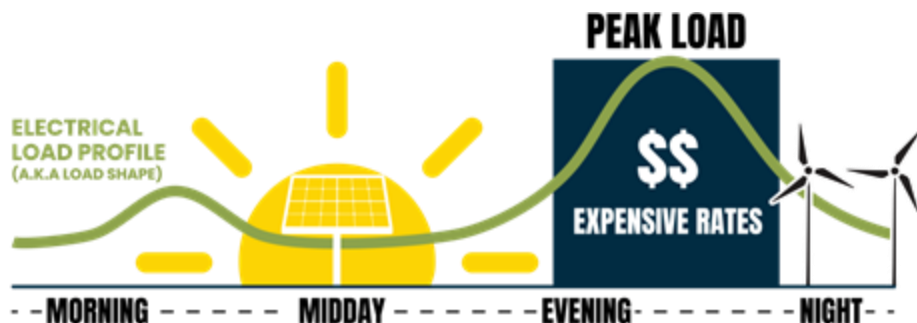
Scan to sign up
for **CalFlexHub**
newsletter



BERKELEY LAB

CalFlexHub is a \$16M CEC EPIC funded research, development, demonstration, and deployment (RDD&D) program (Fall 2021 - 2026) led by Berkeley Lab with 17 funded partners.

CalFlexHub seeks to build a pipeline of technologies capable of providing **automated flexible building and EV-charging loads** to the California power grid.



<https://calflexhub.lbl.gov/>

